

How Europe is responding to Life After Stroke

Prof Peter Kelly, President European Stroke Organisation
ELASF, 10 March 2023

The importance of stroke is widely underestimated

Global burden of stroke

12.2 million incident strokes in 2019 (95% UI 11.0-13.6)

101 million prevalent stroke (93.2-111) (x8)

6.5 million stroke deaths (6.0-7.2) (x 0.5)

143 million DALYs (133-153) (x12)



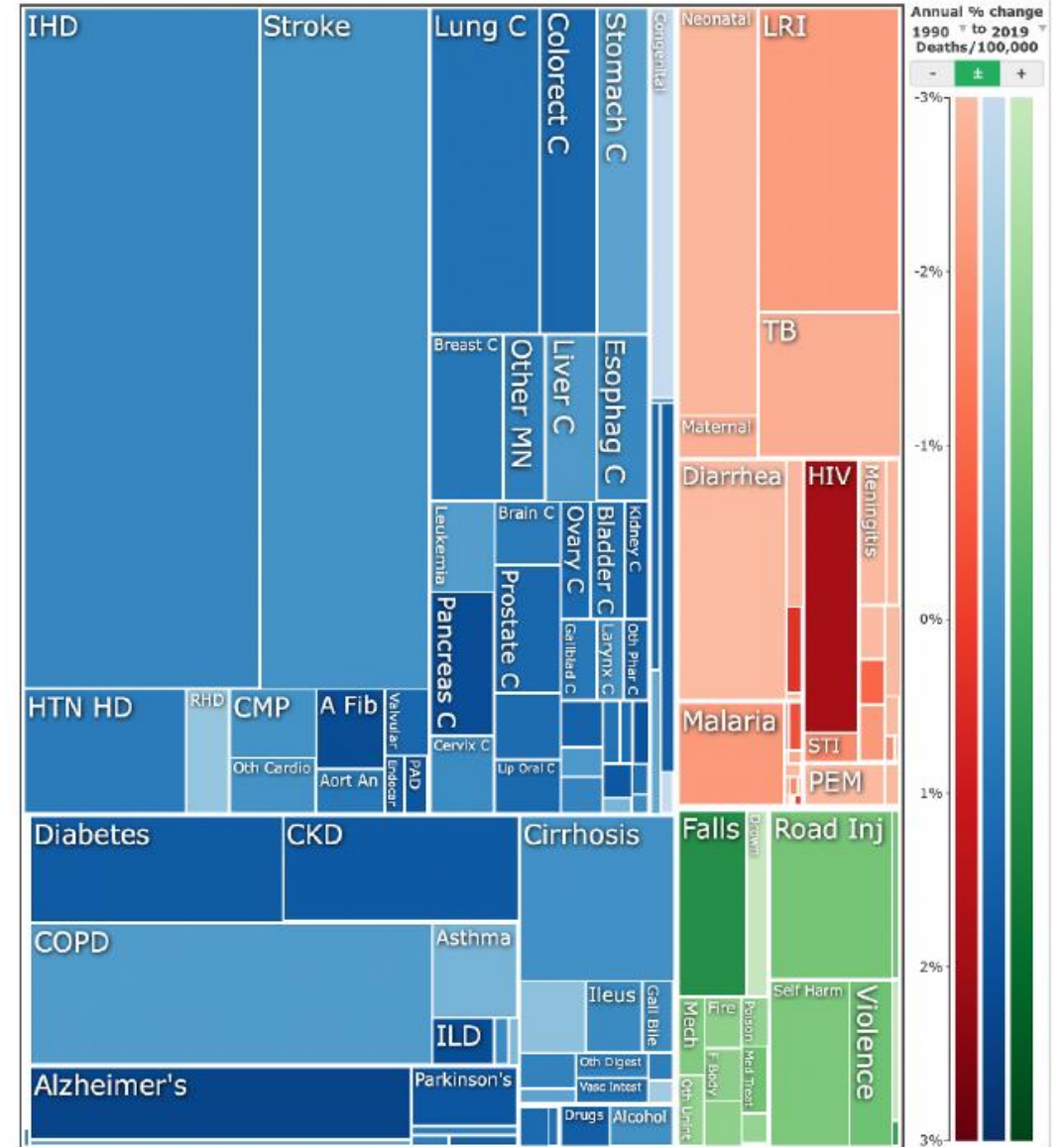
Global burden of stroke

Leading causes of death:

CAD 16.2% (15-16.9%)

Stroke 11.6% (10.8-12.2%)

Global number of deaths by causes in 2019, both sexes, all ages



Global burden of stroke

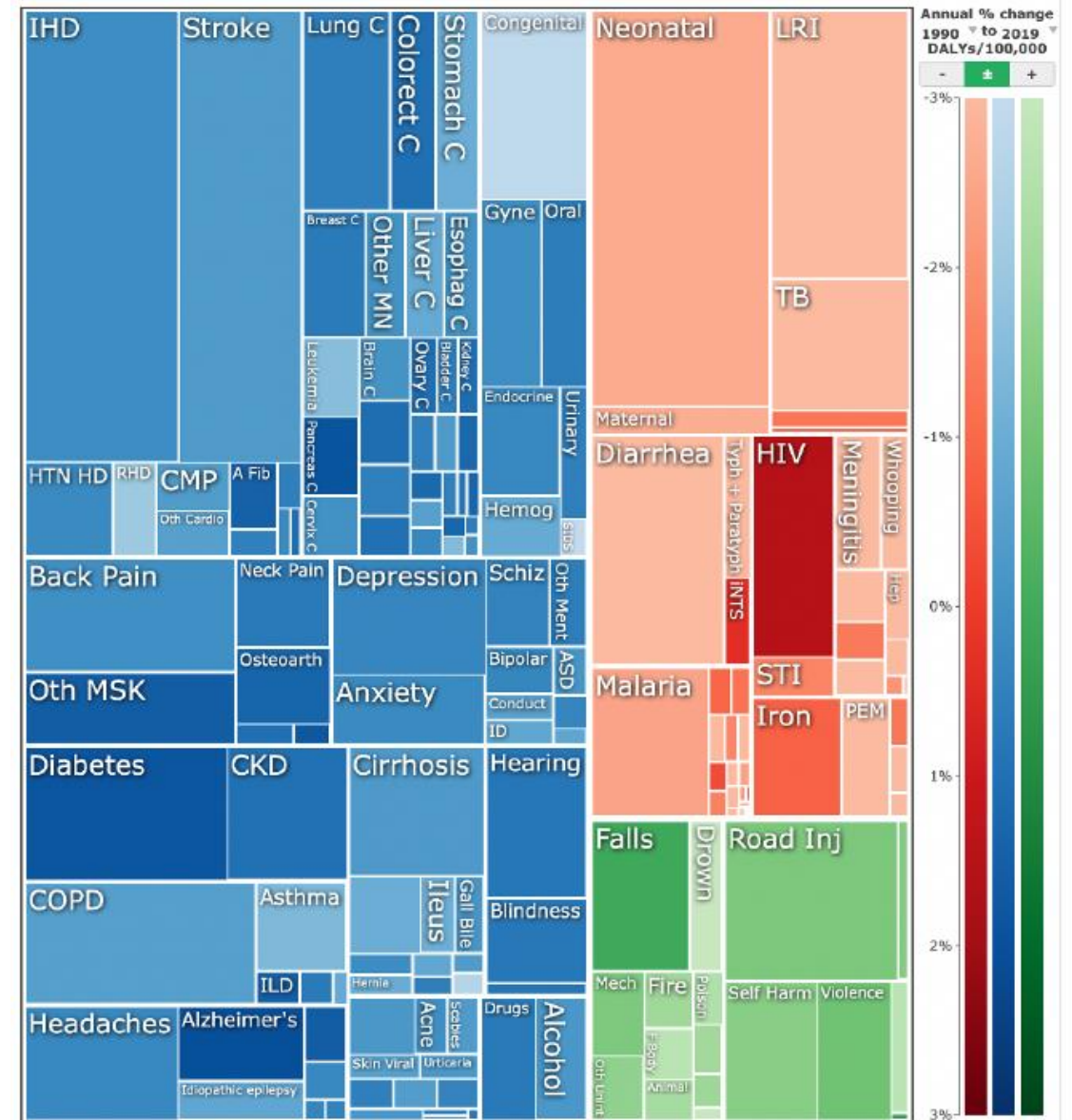
Leading causes of death/disability:

Neonatal disorders: 7.3% (6.4-8.4)

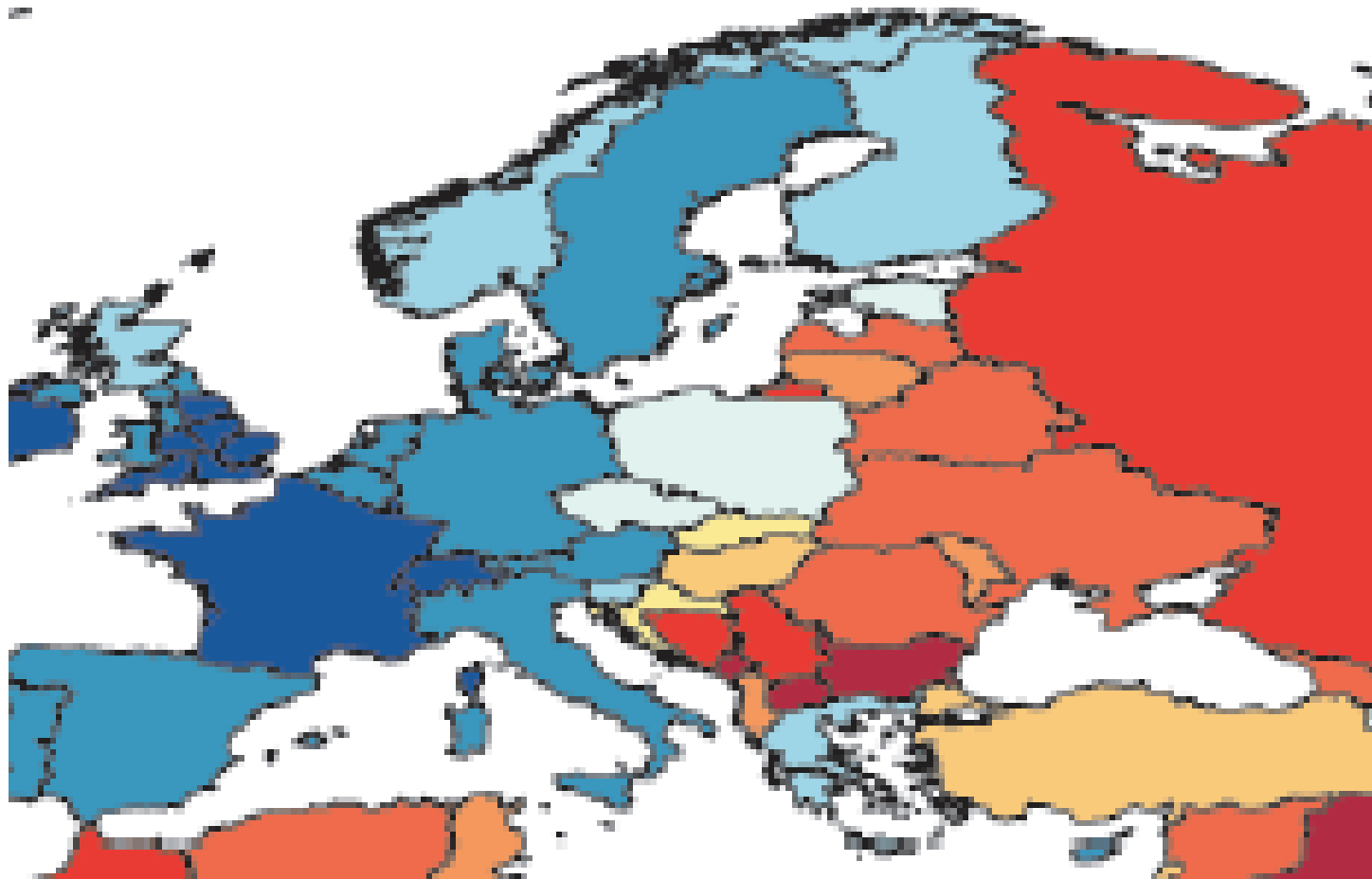
IHD: 7.2% (6.5-8)

Stroke: 5.7% (6.1-8.2)

Global number of DALYs by causes in 2019, both sexes, all ages



Widespread service gaps and inequities in stroke incidence and outcomes in Europe



Stroke incidence is 2-3 times higher in Eastern Europe

Stroke mortality and DALYs are 2-3 times worse

Incidence rates per 100 000 people

■ <64.0	■ 141.7 to <158.0
■ 64.0 to <85.5	■ 158.0 to <175.8
■ 85.5 to <100.5	■ 175.8 to <196.2
■ 100.5 to <124.3	■ 196.2 to <218.3
■ 124.3 to <141.7	■ ≥218.3

Action Plan for Stroke in Europe 2018–2030

**Bo Norrving¹, Jon Barrick², Antoni Davalos³, Martin Dichgans⁴,
Charlotte Cordonnier⁵, Alla Guekht⁶, Kursad Kutluk⁷,
Robert Mikulik⁸, Joanna Wardlaw⁹, Edo Richard¹⁰,
Darius Nabavi¹¹, Carlos Molina¹², Philip M Bath¹³,
Katharina Stibrant Sunnerhagen¹⁴, Anthony Rudd¹⁵,
Avril Drummond¹⁶, Anna Planas¹⁷ and Valeria Caso¹⁸;**
on behalf of the **Action Plan for Stroke in Europe
Working Group***

European Stroke Journal

0(0) 1–28

© European Stroke Organisation

2018



Article reuse guidelines:

sagepub.com/journals-permissions

DOI: 10.1177/2396987318808719

journals.sagepub.com/home/eso



The ‘road-map’ for development of stroke care in Europe

Translated in 12 languages

Action Plan for Stroke in Europe

Co-authored with SAFE

Detailed inclusion of Life After Stroke

‘this area merits recognition in its own right’

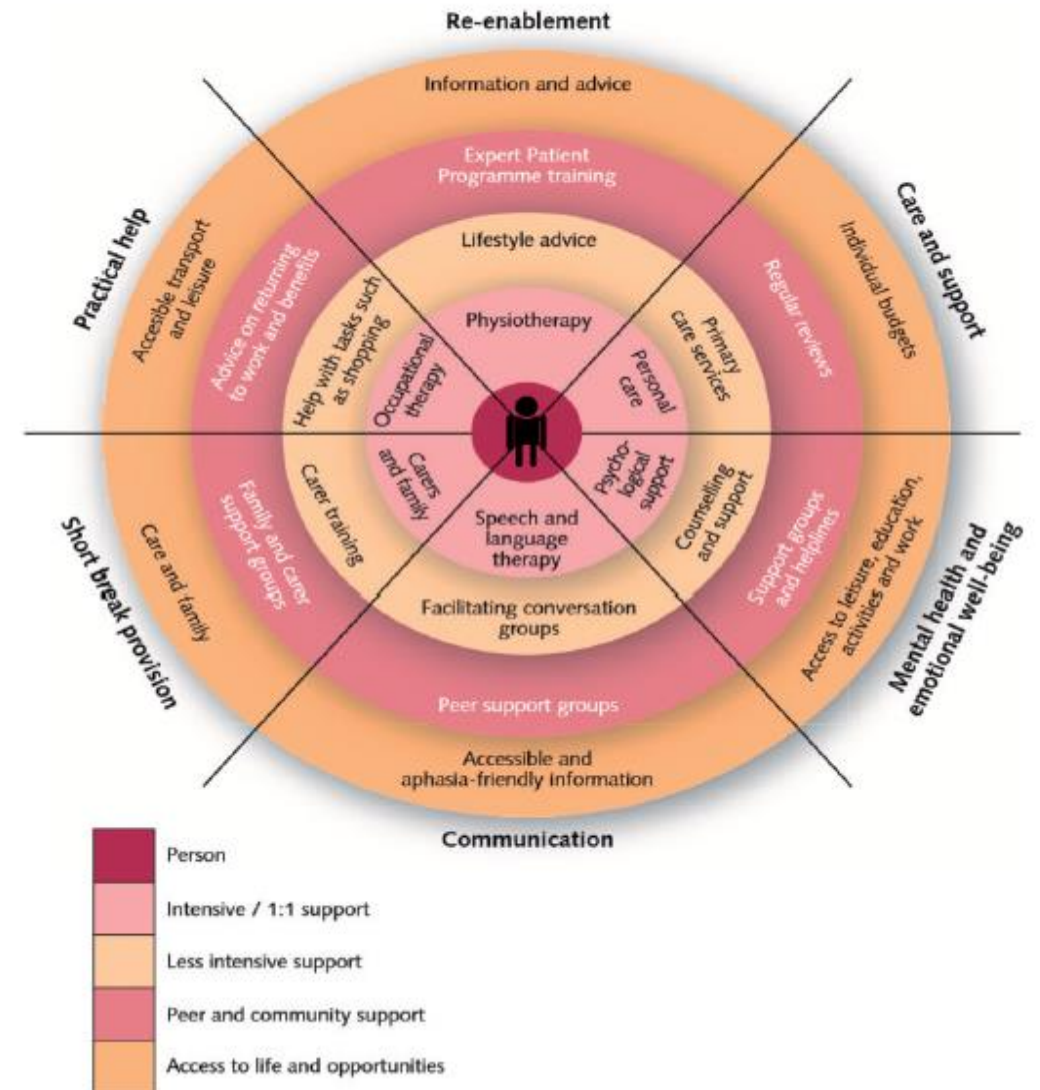
‘overall,little evidence of holistic and coordinated support’

‘includes consideration of those who provide care’

Research and Development priority themes:

1. Investigate long-term needs
2. Develop a long-term model of best care and support
3. Define products, services, information and training for long-term support

The range of support someone may need after a stroke



Action Plan for Stroke Europe LAS

Targets for 2030

1. Appointing government-level individuals or teams responsible for championing life after stroke and ensuring that national stroke plans address survivors' and their families' long-term unmet needs. Minimum standards set for what every stroke survivor should receive regardless of where they live.
2. Formalising the involvement of stroke survivors and carers, and their associations, in identifying issues and solutions to enable the development of best patient and support practices.
3. Establishing, through national stroke care plans, the support that will be provided to stroke survivors, regardless of their place of residence and socioeconomic status.
4. Supporting self-management and peer support for stroke survivors and their families, by backing stroke support organisations
5. Supporting the implementation of digitally-based stroke self-help information and assistance systems.

Stroke Action Plan Europe (SAP-E) Programme

**STROKE
ACTION
PLAN
EUROPE
2018 – 2030**

Collaboration of professionals and patients, ESO and Stroke Alliance For Europe

One of ESO's 4 highest priority programmes ('flagships')

National coordinators in 49 European countries or regions, in partnership with SSOs

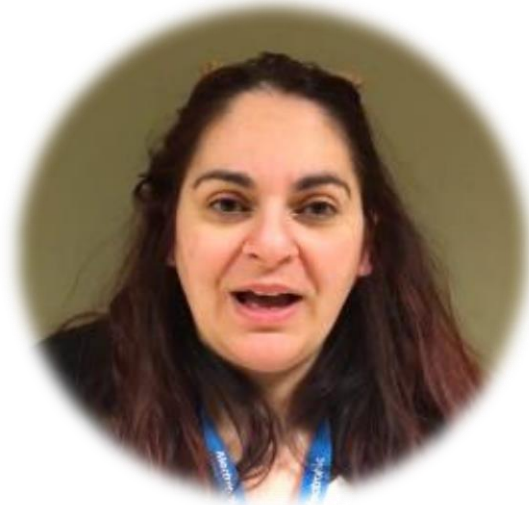
Coordinating office: training, KPIs, SAPE tools, support materials

Goal: With government, National Stroke plans – agreed, funded, implemented, monitored

SAP-E Programme Chairs



Hanne Christensen
Chair

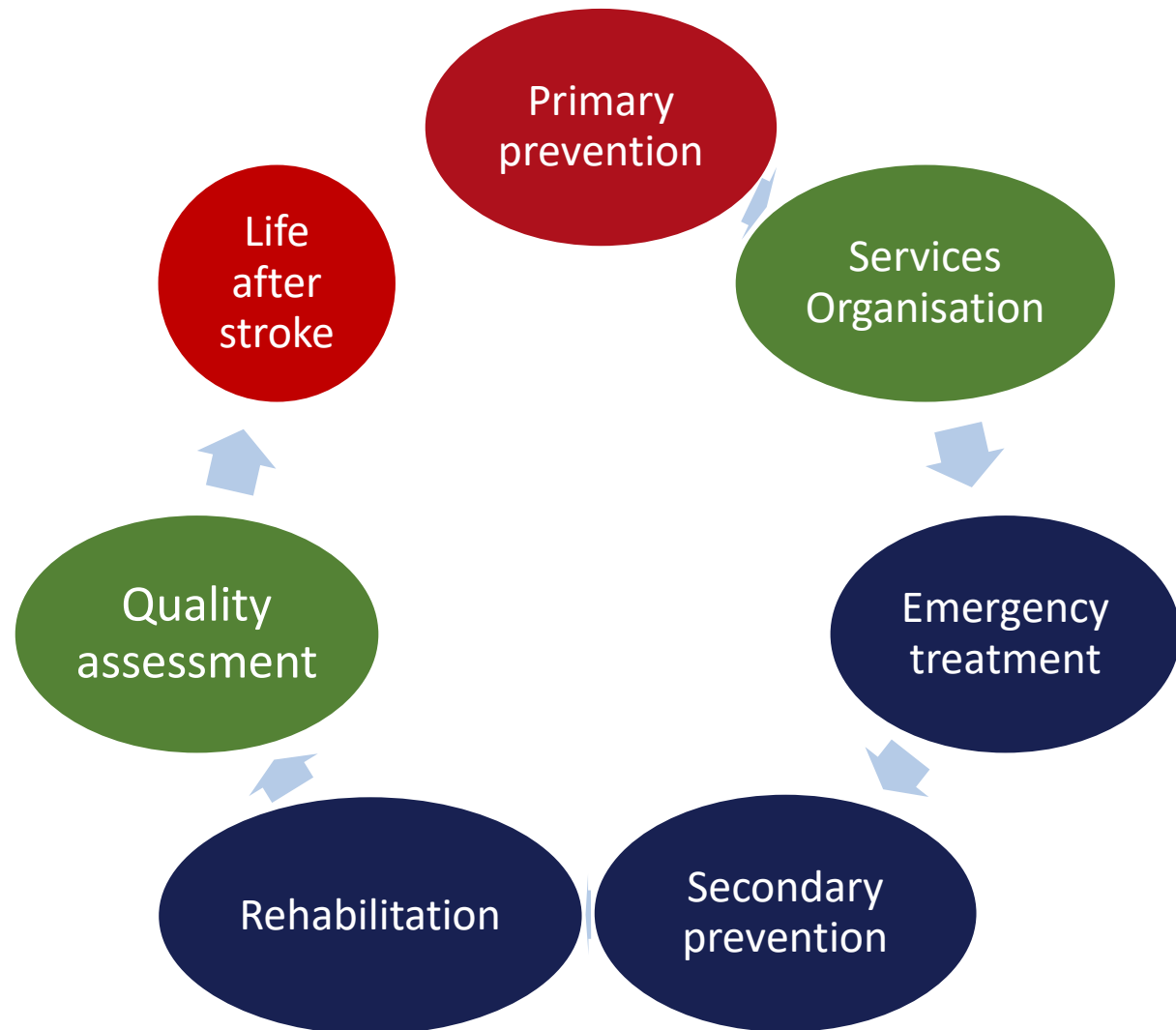


Francesca Pezzella Romana
Co-Chair



Arlene Wilkie, SAFE
Co-Chair

SAP-E 7 domains – the entire chain of care



Community

- primary prevention (education, public awareness, transport, built environment, fossil fuels)
- life after stroke (late rehabilitation, public access for disability)

Hospital/clinics

- Emergency treatment
- Secondary prevention
- Early rehabilitation

Systems

- Service planning (IVT, EVT, rehab, surgery, young stroke)
- Quality assessment (registries, audit)

SAP-E Key Performance Indicators and LAS

Internal use

KPI 1: A national stroke plan defining pathways, care and support after stroke
transition to community, and follow-up

KPI 4: Establishment ofsystems for assessing and accrediting stroke clinical services....

KPI 10: Access to secondary prevention

KPI 11: A binding personalised, documented rehabilitation and sector transition plan ...

KPI 12: Follow-upincluding a Post Stroke Check list ... functional assessment and
referral for relevant interventions

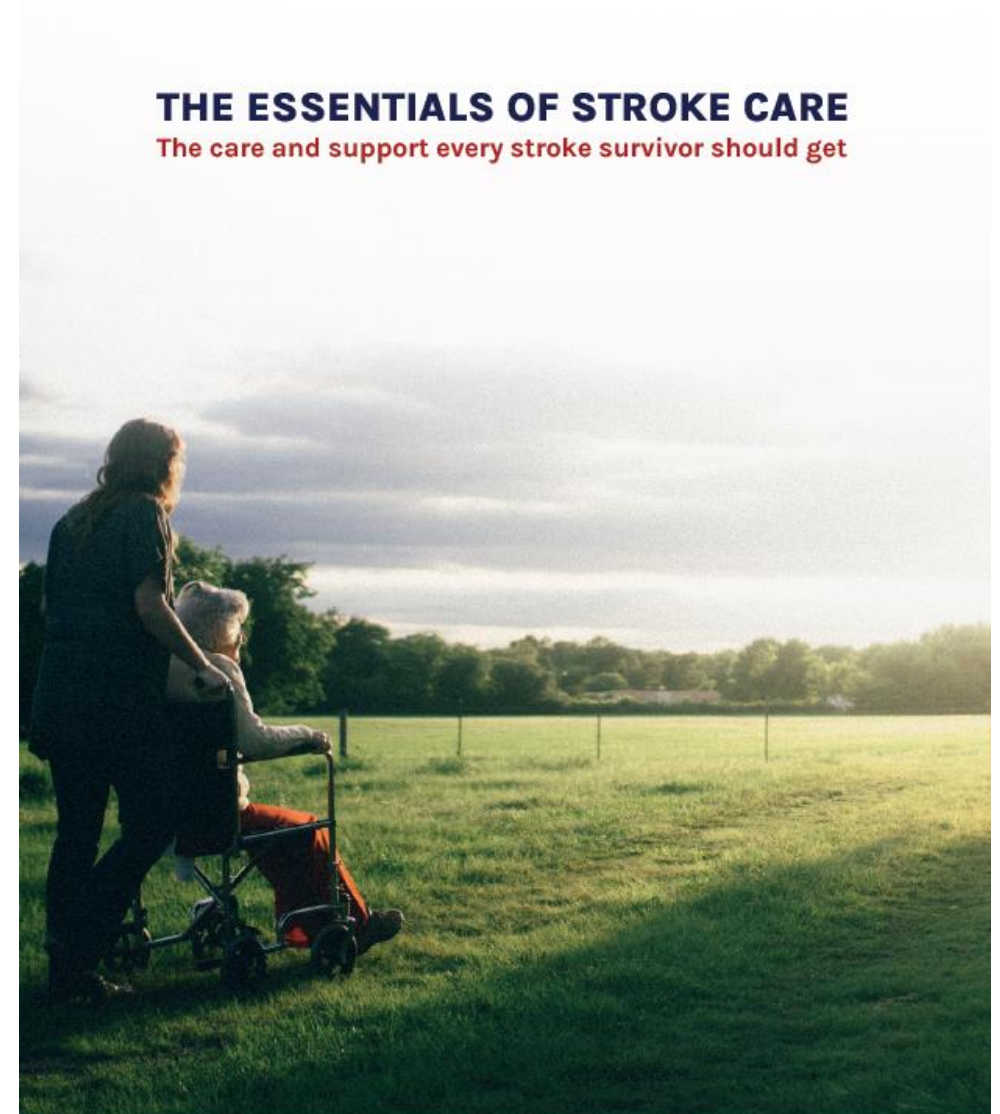
SAP-E Tools – Essentials of Stroke Care

Developed by ESO Guideline Sub-committee (Chair, Prof T Steiner)

Clear list of evidence based recommendations for stakeholders

Versions for professionals/health planners and patients/public

Entire pathway of stroke care



Life after Stroke section

Aspect	Must do	Source	Type of source
Follow-up	Patients should be followed up after stroke for functional decline and new symptoms including pain, e.g. by use of the post-stroke check list , [35] and referred if relevant	[36]	EBR
Involvement, support and education of patients and relatives	Patients and relatives should be involved in making care plans and other planning or decisions for life after stroke and receive appropriate support and education	[36]	EBR
Driving	Assessment for driving ability should be performed according to local legislation	[36]	EBR
Participation (social, work, leisure-time activities)	Individual assessment should be performed, and referral and counseling provided when relevant	[36]	EBR
Relationships/sexuality	Education and counseling should be provided	[36]	EBR
Disability support	Care plans should be completed, and applications made in a timely manner	[36]	EBR
Advanced care planning	Advanced care planning should be made and periodically reviewed.	[36]	EBR
Transition to long-term care	Discharge summary and care plan should be present on admission to long term care In case of ongoing rehabilitation goals, there should be access to relevant rehabilitation services . In case of changes in status, there should be access to reevaluation and rehabilitation	[36]	EBR

SAP-E Tools – National Stroke Plan template

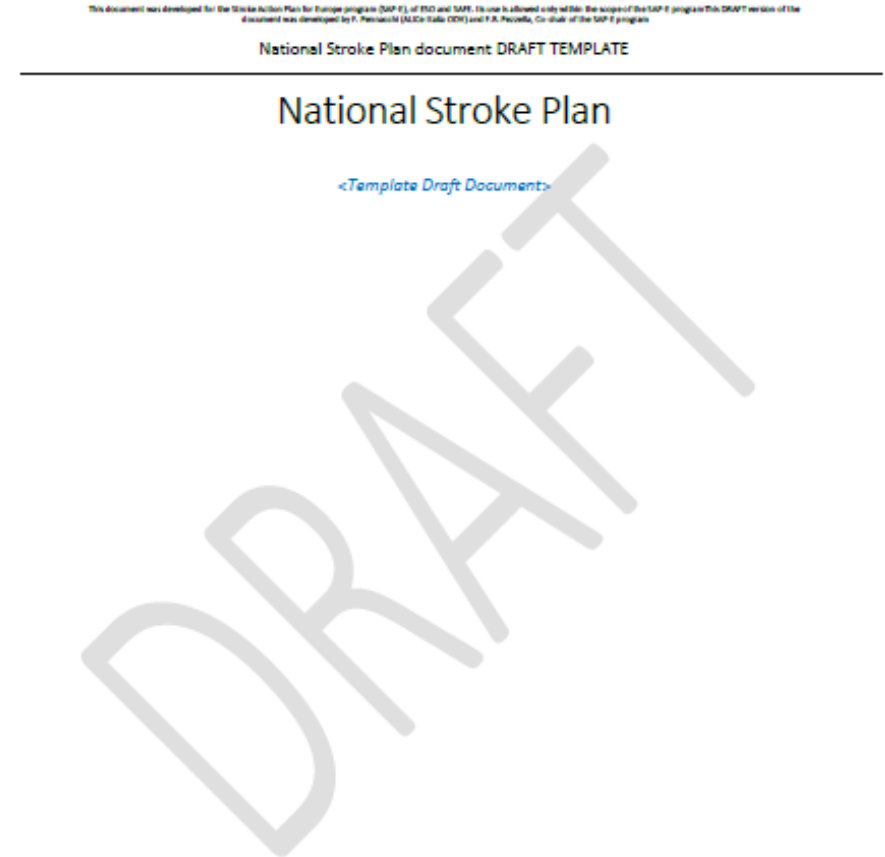
A guide for European health planners to develop National Stroke Plans

Includes:

importance of patients/carers, Stroke Support Organisations as stakeholders

Patient-reported experience/outcome measures

SAP-E Key Performance Indicators for Life After Stroke



SAP-E Tools – Declaration

A formal statement of intent to improve stroke services, signed by the Minister of Health

Lists a commitment to meet Key Performance Indicators across entire stroke pathway including

‘Appointing government-level individuals or teams responsible for championing life after stroke and ensuring that national stroke plans address survivors’ and their families’ long-term unmet needs’

12 countries/regions signed since 17th May 2021



Declaration
Stroke Action Plan
for Europe

Mailing List Sign-up



Home

Implementation

Resources

Domains

About SAP-E

Contact

2022 Status Report shows big strides for stroke

ESO and SAFE have published the 2022 Status Report highlighting progress made in the past year for the SAP-E. With this important collaboration, the SAP-E Steering Committee continues to build on its achievements from the current year.

[Read The Full Status Report Here](#)

Quick Links. Select a document here...



Advocacy - WHO Europe

- ESO official WHO Non-State Actor status
- Post-pandemic strategic relationship to raise profile of stroke with WHO Europe, to influence EU and national governments

72nd Session WHO Europe, September 2022:

WHO EUROPEAN FRAMEWORK FOR ACTION TO ACHIEVE THE HIGHEST ATTAINABLE STANDARD OF HEALTH FOR PERSONS WITH DISABILITIES 2022–2030

‘We call for actions to ensure stroke patients’ access to rehabilitation, assistive technology, support services (including peer support), and community-based rehabilitation. We emphasize the importance of developing laws, policies, and plansaimed at an environment socially and professionally inclusive for stroke patients and their families’



[who.int/europe/news/it...](https://www.who.int/europe/news/it...)



European Disability Forum and Satish Mishra

Advocacy – EU:

- ESO is working with SAFE to make stroke an EU priority
- Submissions to EU Commission for 2022 Non-Communicable Disease Initiative, Healthier Together:

‘Priority 5: Supporting EU countries to ...implement national plans for stroke encompassing the entire chain of care. This priority area builds on the European Stroke Action Plan 2018-2030, developed by the European Stroke Organisation in consultation with the Stroke Alliance for Europe’

- NCDI – ‘a toolkit to guide’ best practices (CV, DM, respiratory, brain)
- A detailed EU Policy plan for stroke needed
- ESO/SAFE partnership with European Alliance Cardiovascular Health for EU CV Plan including stroke

The image is a composite of two promotional materials. The top part is a blue poster for the 'Healthier Together EU Non-Communicable Diseases Initiative'. It features the European Commission logo at the top. The main title is 'Healthier Together EU Non-Communicable Diseases Initiative'. Below the title is a graphic showing several people interacting with a large red square containing a white icon of a person with a heart and a brain. The graphic is surrounded by labels: 'Health determinants', 'Cardiovascular diseases', 'Diabetes', 'Respiratory diseases', and 'Mental health and neurological disorders'. At the bottom of the poster, it says 'June 2022' and '#HealthierTogether'. The bottom part of the image is a red banner with the 'each' logo (European Alliance for Cardiovascular Health) and the text 'A European Cardiovascular Health Plan: The need and the ambition'. Below the banner is a photograph of a diverse group of people looking up at the camera.

ESO supports:

**STROKE
ACTION
PLAN
EUROPE
2018 – 2030**

1. Long-term support for stroke survivors and carers
2. Structured follow up and access to:
 - Stroke specialists
 - Rehabilitation therapies
 - Secondary prevention
 - Services for mental and cognitive health
3. Further research into needs and service models
4. A European model of care for long-term needs after stroke



A life saved is a life worth living

The unmet needs of stroke survivors in Europe:

A scoping review of the literature on life after stroke

Call to action:

**ESO and SAFE call for MOHs to SUPPORT THE STROKE
ACTION PLAN FOR EUROPE**

**NATIONAL STROKE PLANS covering the entire pathway
of stroke care**

**AGREED, FUNDED, IMPLEMENTED,
AND MONITORED**